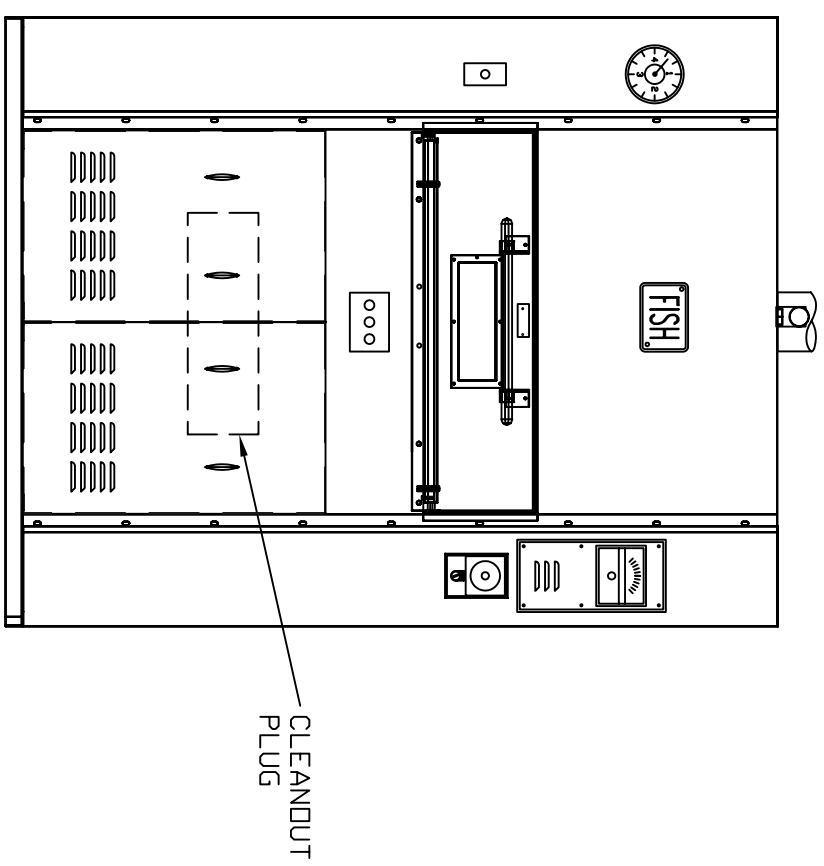
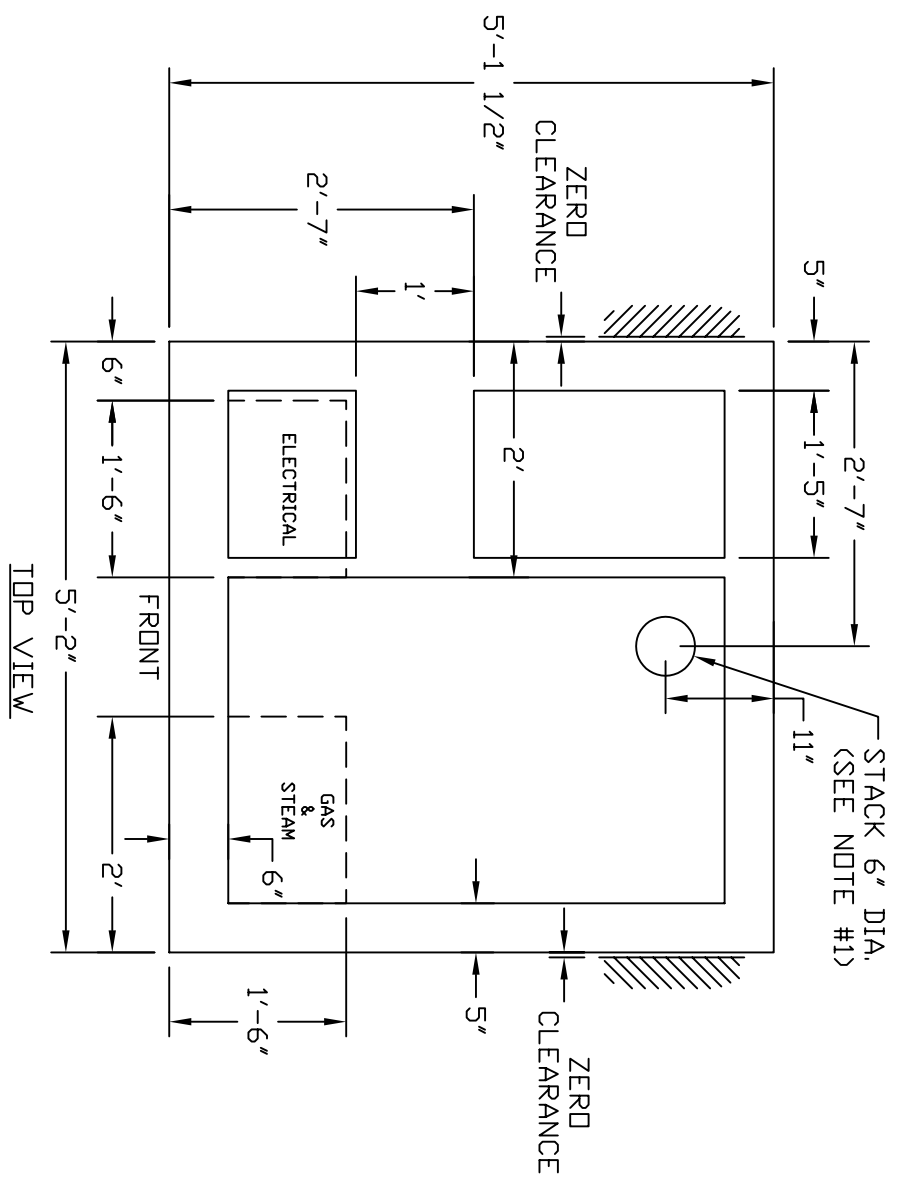


REV	DESCRIPTION	BY	DATE	MODEL: P-38	UNLESS OTHERWISE SPECIFIED TOLERANCES ON DIMENSIONS IN INCHES	THIS DRAWING IS THE PROPERTY OF CAMPBELL INTERNATIONAL, AND MAY NOT BE REPRODUCED FOR ANY PURPOSE WITHOUT WRITTEN CONSENT OF THE COMPANY.	FISH OVEN & EQUIPMENT, INC. WAUCONDA, IL 60084	DWG. #	REV.
				STYLE: P-38B	DECIMALS .XXX ± .030			P-38B-FP	
				ASSEMBLY	FRACTIONAL .XX ± .060		TITLE: P-38 GAS OVEN	DATE	PAGE
				NO. REG'D	± 1/16			01/29/07	
				MAT'L:					



SERVICE CONNECTIONS:

- 1 - ELECTRICITY AND GAS LINES MAY BE BROUGHT THROUGH THE FLOOR OUTSIDE SHADED AREAS, PREFERABLY IN AREAS SHOWN.
- 2 - ELECTRICITY AND GAS LINES ABOVE FLOOR LEVEL MAY BE BROUGHT THROUGH A SIDE OR REAR WALL NEAR THE FLOOR BY CUTTING THE REQUIRED HOLES.
- 3 - STEAM MAY BE BROUGHT IN HERE FROM BELOW OR ABOVE (IF REQUIRED).

SERVICE LINES:

- ONE - 1/2" ELECTRICAL CONDUIT - 110V/1PH/60HZ/15AMP
- ONE - 1/2" GAS LINE - 90,000 BTU
- ONE - ADDITIONAL ELECTRICAL CONDUIT WHEN 220V IS USED FOR ELECTRIC BURNER AND DRIVE.
- ONE - 3/4" PIPE, STEAM LINE (IF REQUIRED)

NOTES:

#1 - A 6" EXHAUST FLUE MUST BE PROPERLY VENTED TO THE OUTSIDE OF THE BUILDING AND PROVIDE A 0.03-0.05 INCH WATER COLUMN UP DRAFT. A VERTICAL DRAFT DIVERTER OR EQUIVALENT, MUST BE INSTALLED IN ALL NATURALLY VENTED OVENS.

