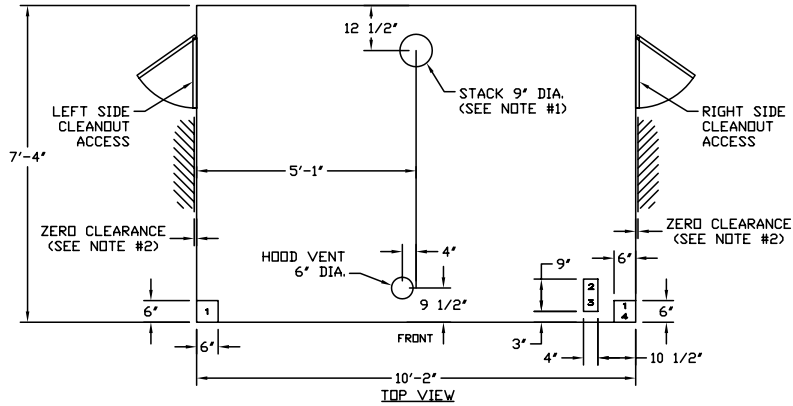


REV	DESCRIPTION	BY	DATE	MODEL: 75-20	UNLESS OTHERWISE SPECIFIED TOLERANCES ON DIMENSIONS IN INCHES DECIMALS .XXX ± .030 .XX ± .060 FRACTIONAL ± 1/16	THIS DRAWING IS THE PROPERTY OF CAMPBELL INTERNATIONAL, AND MAY NOT BE REPRODUCED FOR ANY PURPOSE WITHOUT WRITTEN CONSENT OF THE COMPANY.	FISH OVEN & EQUIPMENT, INC. WAUCONDA, IL 60084	DWG. # 75-20	REV.	
△				STYLE:						
				ASSEMBLY	NO. REQ'D		TITLE: 75-20 GAS OVEN	DRN BY M.S.	DATE 05/13/04	PAGE
								CR'D BY	DATE	



SERVICE CONNECTIONS

- 1 - ELECTRICITY AND GAS MAY BE BROUGHT IN HERE FROM ABOVE OVEN.
- 2 - ELECTRICITY AND GAS MAY BE BROUGHT IN HERE BELOW OVEN. (MAXIMUM PROJECTION OF CONDUIT ABOVE FLOOR = 3').
- 3 - STEAM MAY BE BROUGHT IN HERE FROM BELOW OVEN (IF REQUIRED).
- 4 - STEAM MAY BE BROUGHT IN HERE FROM ABOVE OVEN (IF REQUIRED). ALSO THIS LOCATION FOR CONDENSATE FLOOR DRAIN.

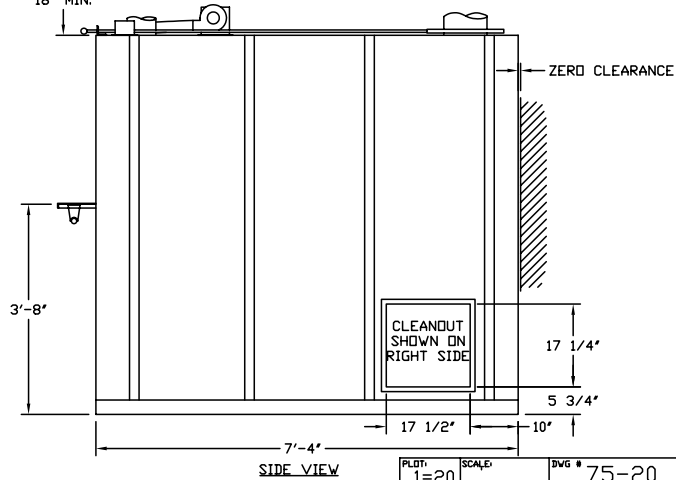
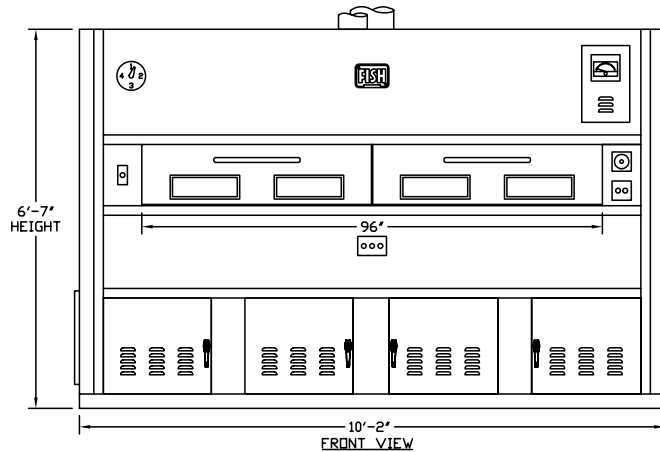
SERVICE LINES

- ONE - 1/2" ELECTRICAL CONDUIT - 115V/1PH/60HZ/20AMP
- ONE - 1" GAS LINE - 240,000 BTU
- ONE - ADDITIONAL ELECTRICAL CONDUIT WHEN 220V IS USED FOR ELECTRIC BURNER AND DRIVE.
- ONE - 1" PIPE, STEAM LINE (IF REQUIRED)

NOTES:

- #1 - A 9" EXHAUST FLUE MUST BE PROPERLY VENTED TO THE OUTSIDE OF THE BUILDING AND PROVIDE A 0.03-0.05 INCH WATER COLUMN UP DRAFT. A VERTICAL DRAFT DIVERTER OR EQUIVALENT, MUST BE INSTALLED IN ALL NATURALLY VENTED OVENS.
- #2 - ZERO CLEARANCE, ONLY IF CLEANOUT IS NOT ON THIS SIDE.

RECOMMENDED
18" MIN.



PLOT: 1=20 SCALE: DWG # 75-20